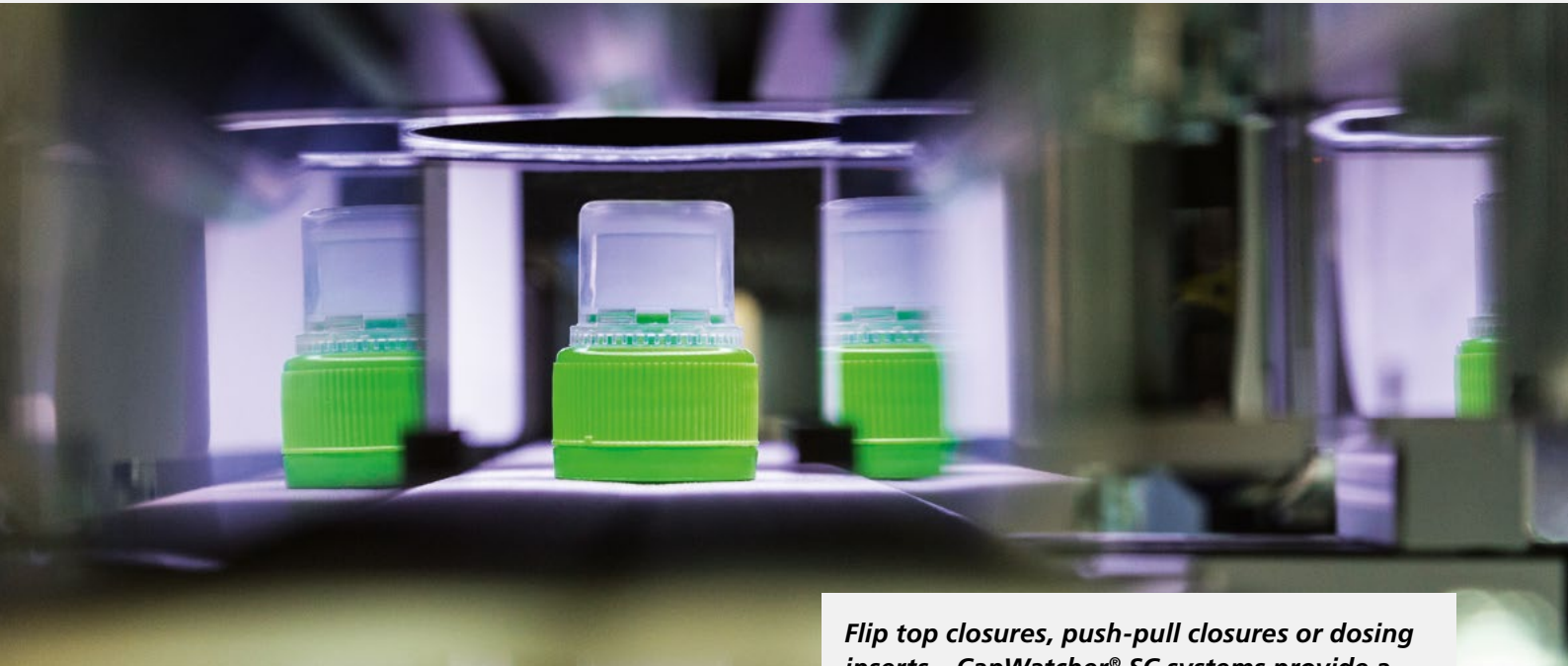


# CAPWATCHER® SC

## INSPECTION OF SPECIALTY CLOSURES

In the area of specialty closures, INTRAVIS is one of the leading producers in terms of quality inspection worldwide. Fast and complete closure inspection is covered by several systems – according to the variety of the closures and appropriate inspection tasks. INTRAVIS CapWatcher® SC systems are trusted by specialty closure manufacturers.



*Flip top closures, push-pull closures or dosing inserts – CapWatcher® SC systems provide a fast and objective inspection*

The CapWatcher® SC systems inspect **specialty closures** like push-pull closures, sports caps, flip top closures or closures with several tamper bands.

### SPECIAL INSPECTIONS

The systems build upon the robust inspection of the CapWatcher® III by adding inspections specifically designed for the specialty closures. They detect a **broad variety of material and manufacturing defects**.

Furthermore, all specialty closures can be inspected for flawless tamper bands and contamination-free appearance. Our exact rotational positioning makes the inspection precise and safe.

The CapWatcher® SC systems inspect various specialty closures with respect to the following criteria:

### CLOSURES

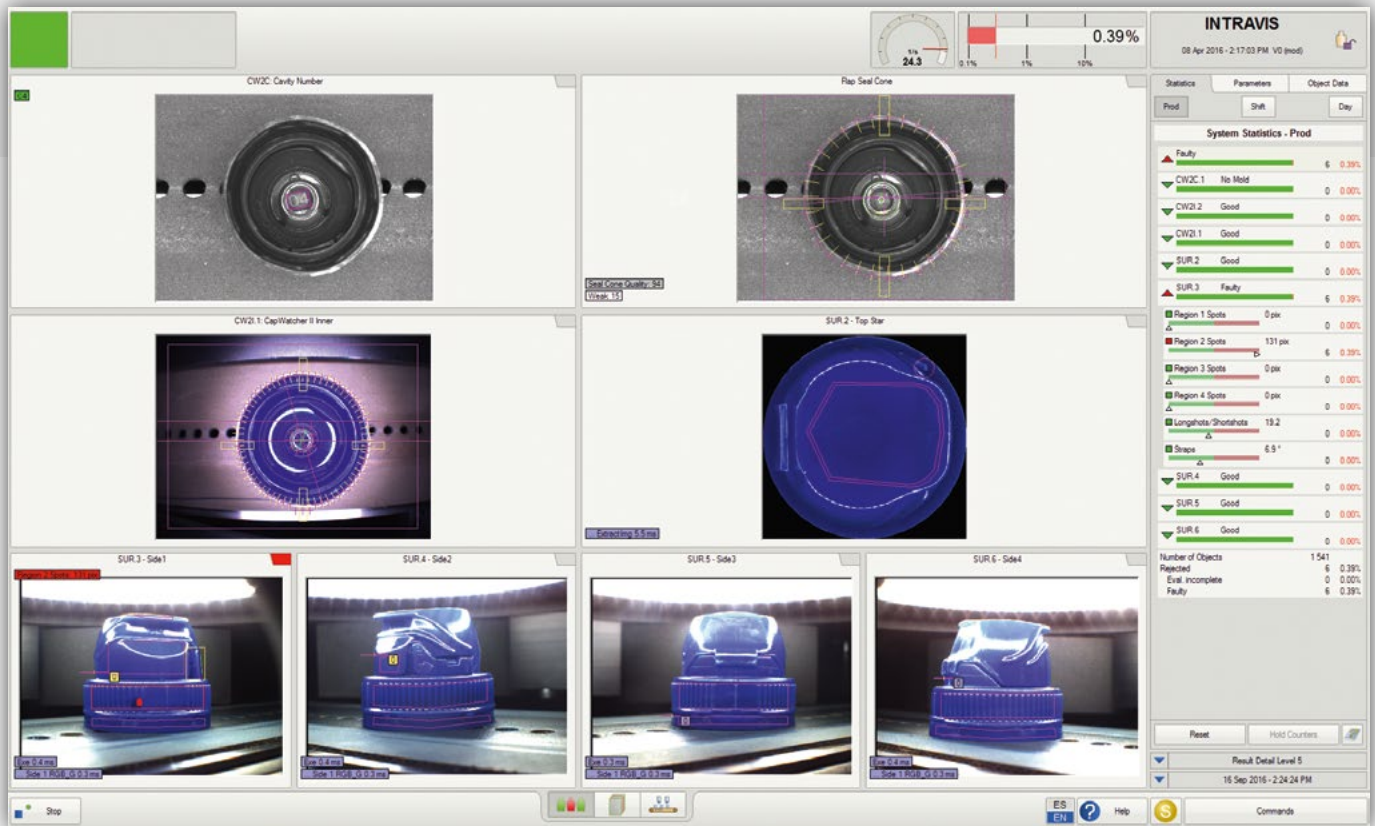
- \ Flip top closures
- \ Sports caps (including push-pull closures)
- \ Tube closures
- \ Closures for the chemical industry

### INSPECTION CRITERIA CLOSURES

- \ Assembly faults
- \ Missing components
- \ Diameter and ovality of the closure
- \ Flow lines
- \ Horizontal/radial long shots
- \ Open and closed short shots
- \ Contamination on the outer wall

# CAPWATCHER® SC

## INSPECTION OF SPECIALTY CLOSURES



- \\ Damaged pull tabs
- \\ Vertical long shots
- \\ Closure height
- \\ Scratches and pressure marks
- \\ Damaged flaps
- \\ Bent flaps
- \\ Diameter and ovality of the seal cone
- \\ Damages of the seal cone
- \\ Color deviations on the inside
- \\ Defects at tamper bands and tamper-evident closures
- \\ Missing or incomplete tamper bands
- \\ Defects at joints and hinges

### INSERTS

- \\ Dosing inserts
- \\ Liners
- \\ Child protection

### ADDITIONAL INSPECTION CRITERIA FOR INSERTS

- \\ Missing components
- \\ Closure height (only metering inserts)
- \\ Diameter and ovality
- \\ Flow lines