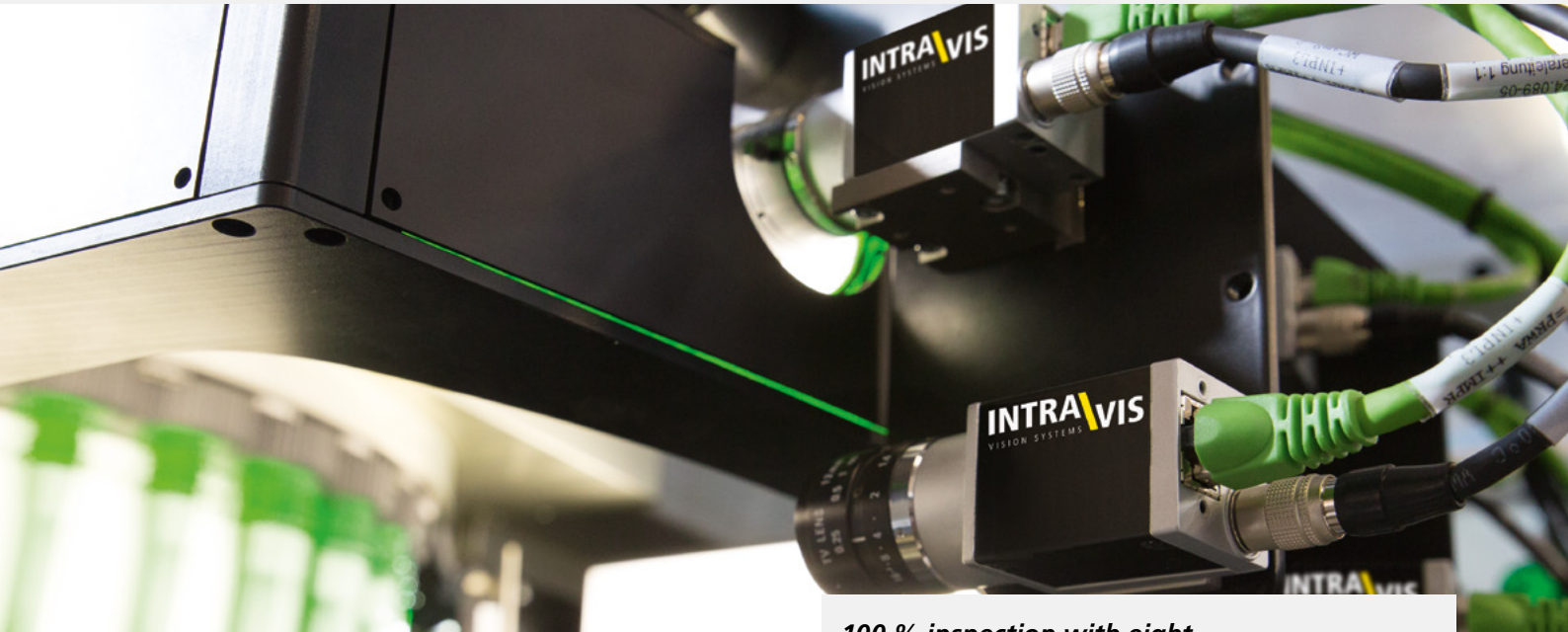




## PREWATCHER® INLINE INSPECTION OF PREFORMS

The PreWatcher® Inline is the INTRAVIS Inspection System that allows the bulk inspection of preforms. In its third generation, it is designed as an inline solution and is distinguished by its exceptional space-saving design and high inspection speeds. Furthermore, it is able to read cavity numbers.



**100 % inspection with eight cameras: the PreWatcher® Inline**

The PreWatcher® Inline inspects the quality characteristics of up to 72,000 preforms per hour with a **footprint of only eight square meters**. The orientation mechanism that operates with centrifugal force is integrated directly into the system.

Six cameras inspect thread and body while two cameras ensure the inspection of the top sealing surface and the gate area. The system includes the most elaborate **cavity number reading** worldwide as INTRAVIS were first to offer this inspection possibility in 2004. The specific self developed software has been refined ever since and does not draw on foreign libraries.

The PreWatcher® Inline can be installed inline behind an injection molding machine. Aside from production the PreWatcher® Inline can be used for offline inspection in combination with bunker, tipper and octabin filler.

### INSPECTION CRITERIA GEOMETRY/BODY

- \\ Length, shape
- \\ Diameter

- \\ Short shots
- \\ Length of gate
- \\ Unmelted material
- \\ Bubbles
- \\ Oil marks
- \\ Burn spots
- \\ Contamination

### INSPECTION CRITERIA CAVITY NUMBER READING

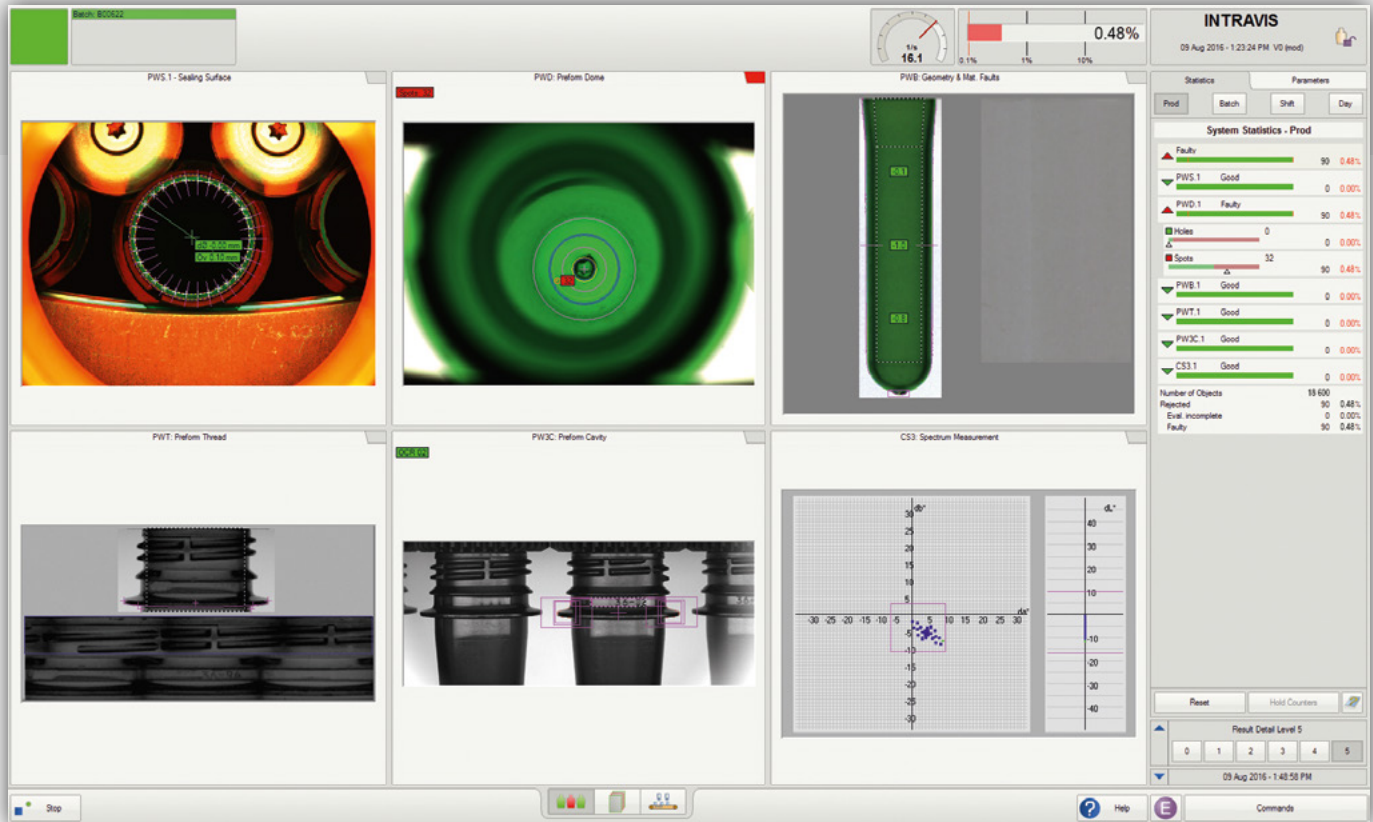
- \\ Sorting-out of preforms according to previously specified cavity numbers
- \\ Cavity number related defect statistics

### INSPECTION CRITERIA COLOR

- \\ Color and intensity deviations ( $\Delta L^*$ ,  $\Delta a^*$ ,  $\Delta b^*$ )
- \\ UV measurement (presence UV blocker)
- \\ IR measurement (presence barrier material)



# PREWATCHER® INLINE INSPECTION OF PREFORMS



## INSPECTION CRITERIA MOUTH

- \\ Diameter
- \\ Ovality
- \\ Flash
- \\ Scratches and notches on the sealing surface

## INSPECTION CRITERIA GATE

- \\ Grooves
- \\ Holes
- \\ Contamination

## INSPECTION CRITERIA THREAD AREA

- \\ Contamination
- \\ Thread dimensions
- \\ Defects at the neck support ring

## Inspection speed

- \\ < 72,000 objects / hour (maximum object rate)

## Electric connection (electrical cabinet)

- \\ Rated voltage 3/PE 400-480 V, 50/60 Hz, loadable neutral conductor\*
- \\ Rated power 12,5 A, 8,5 kW

## Dimensions and weight

- \\ Length 3176 mm
- \\ Width 2345 mm
- \\ Height 2103 mm (closed centrifuge)
- \\ Weight 1000 kg

\* All systems are available in UL/CE configuration  
Other voltages upon request