

# CAPWATCHER® III

## INSPECTION OF CLOSURES

The third generation of the well-established CapWatcher® inspects closures better than ever. The system is distinguished by advanced features, including processing an increased volume of image data, improved closure handling as well as complete system control through a single HMI.



*The CapWatcher® III also inspects lightweight and often translucent closures with thin walls and smaller tamper evident bands*

Precise data, powerful decisions. For this reason up to seven cameras capture high-resolution images of each individual closure. The completely redesigned mechanics with innovative and efficient solutions for separation and micro-hole detection allow for inspection speeds of up to **252,000 closures per hour**. The closures are handled gently and securely, even ultra-lightweight water closures are inspected effortlessly.

The CapWatcher® III **can be used inline**, but **also offline** for a follow-up inspection of closure batches in combination with bunker, sorter and octabin filler. The new central control of each individual component is conveniently operated through the INTRAVIS HMI.

A special object separation **with integrated micro-hole inspection** on the unique double track conveyor enables the correlation of the detected microholes to the specific cavities.

### INSPECTION CRITERIA INNER INSPECTION

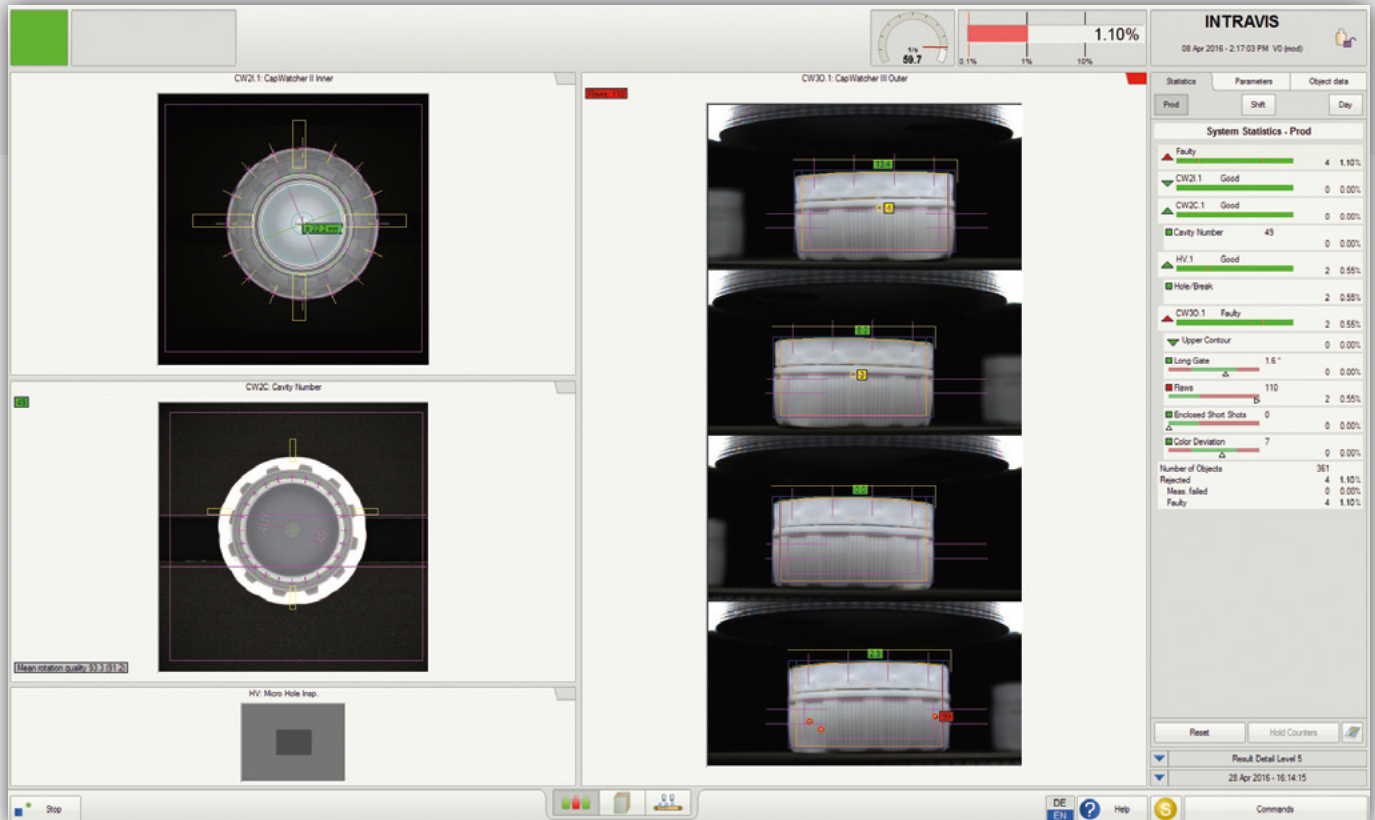
- \\ Diameter and ovality of tamper evident band
- \\ Diameter and ovality of seal cone
- \\ Seal cone damage
- \\ Spots and contamination on the inside of the head plate
- \\ Color deviations
- \\ Flow lines
- \\ Horizontal and vertical long shots
- \\ Damaged flaps
- \\ Liner inconsistencies

### INSPECTION CRITERIA CAVITY READING

- \\ Reading the cavities and sorting them out according to cavity numbers
- \\ Extended cavity-related statistics, also for microhole defects

# CAPWATCHER® III

## INSPECTION OF CLOSURES



### HV INSPECTION MODULE

- Micro-holes in the area of the injection gate

### INSPECTION CRITERIA OUTER INSPECTION

- Open and closed short shots
- Spots on the side wall
- Missing tamper evident band
- Vertical long shots
- Turned up flaps
- Closure height

### FURTHER INSPECTION OPTIONS

- Outside headplate
- Printed image
- Registration shifts, position (printed image)
- Imperfections
- Slitted and folded closures

### Inspection speed

- 252,000 objects / hour (maximum object rate)

### Object dimensions

- Diameter 20-42 mm
- Height 10-20 mm

### Electric connection (electrical cabinet)

- Rated voltage 3/N/PE AC 400/230 V, 50/60 Hz\*
- Rated current 5 A

### Compressed air supply

- 6-8 bar, oil-free, filtered

\* All systems are available in UL/CE configuration  
Other voltages upon request